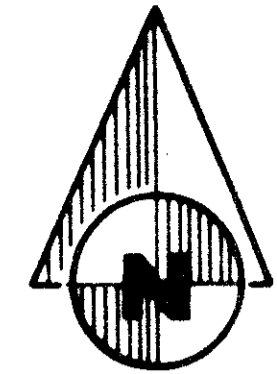


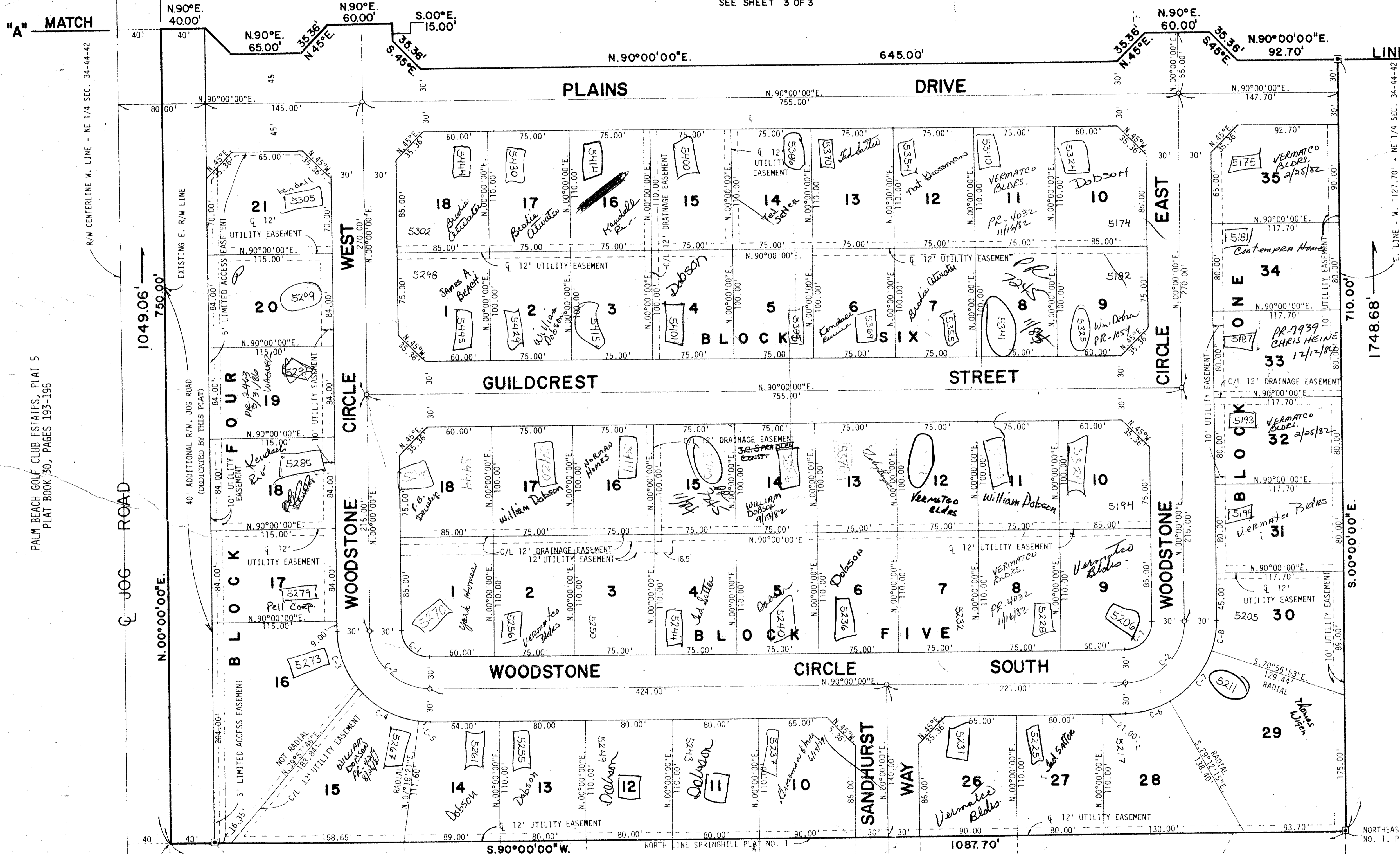
STATE OF FLORIDA
 COUNTY OF PALM BEACH
 THIS PLAT WAS FILED FOR
 RECORD AT _____ M.
 THIS ____ TH DAY OF _____
 AD, 1978 AND DULY RE-
 CORDED IN PLAT BOOK
 ON PAGES ____ AND ____
 JOHN B. DUNKLE, CLERK
 CIRCUIT COURT
 BY: _____ DC



Springhill Plat No. 2

Lying in the Northeast 1/4 of Section 34,
 Township 44 South, Range 42 East, Palm
 Beach County, Florida-

SEE SHEET 3 OF 3



PALM BEACH GOLF CLUB ESTATES, PLAT 5
 PLAT BOOK 30, PAGES 193-196

NORTHWEST CORNER SPRINGHILL PLAT
 NO. 1, P.B. 33, PP. 170-171

TURNOUT REQUIRED

1000-125
 34-43

C. NO.	CENT. ANG.	RADIUS	ARC	CHORD	TANGENT
C. 1	90°00'00"	25.00'	39.27'	35.36'	25.00'
C. 2	90°00'00"	55.00'	86.39'	77.78'	55.00'
C. 3	39°31'21"	85.00'	58.63'	57.48'	30.54'
C. 4	43°10'18"	85.00'	64.05'	62.54'	33.63'
C. 5	29°12'15"	85.00'	10.84'	10.83'	5.43'
C. 6	29°12'15"	85.00'	43.33'	42.86'	22.14'
C. 7	41°44'38"	85.00'	61.93'	60.57'	32.41'
C. 8	19°03'07"	85.00'	28.26'	28.13'	14.26'

SPRING HILL PLAT NO. 1
 (PLAT BOOK 33, PAGES 170 & 171)

SPRINGHILL

#2

BENCH MARK
 land surveying and mapping, inc.
WANTMAN & ASSOCIATES, INC.
 CONSULTING ENGINEERS
 WEST PALM BEACH FLORIDA

34-43
 142
 SPRING HILL PLAT NO. 2

NO.	DATE	DESCRIPTION	BY	DRAWN	FIELD BOOK	DATE	JOB NO.	SHEET
1				WS	NO.	1978	2900	2
2				DESIGNED	CHECKED	SCALE	DRAWING NO.	3
		REVISIONS				1"=50'		

Springhill Plat No. 2

Lying in the Northeast 1/4 of Section 34,
Township 44 South, Range 42 East, Palm
Beach County, Florida-

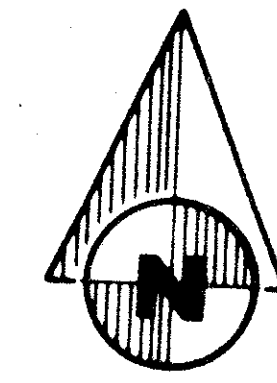
NORTH R/W LINE L.W.D.D. LATERAL CANAL L-14

L.W.D.D. LATERAL CANAL L-14

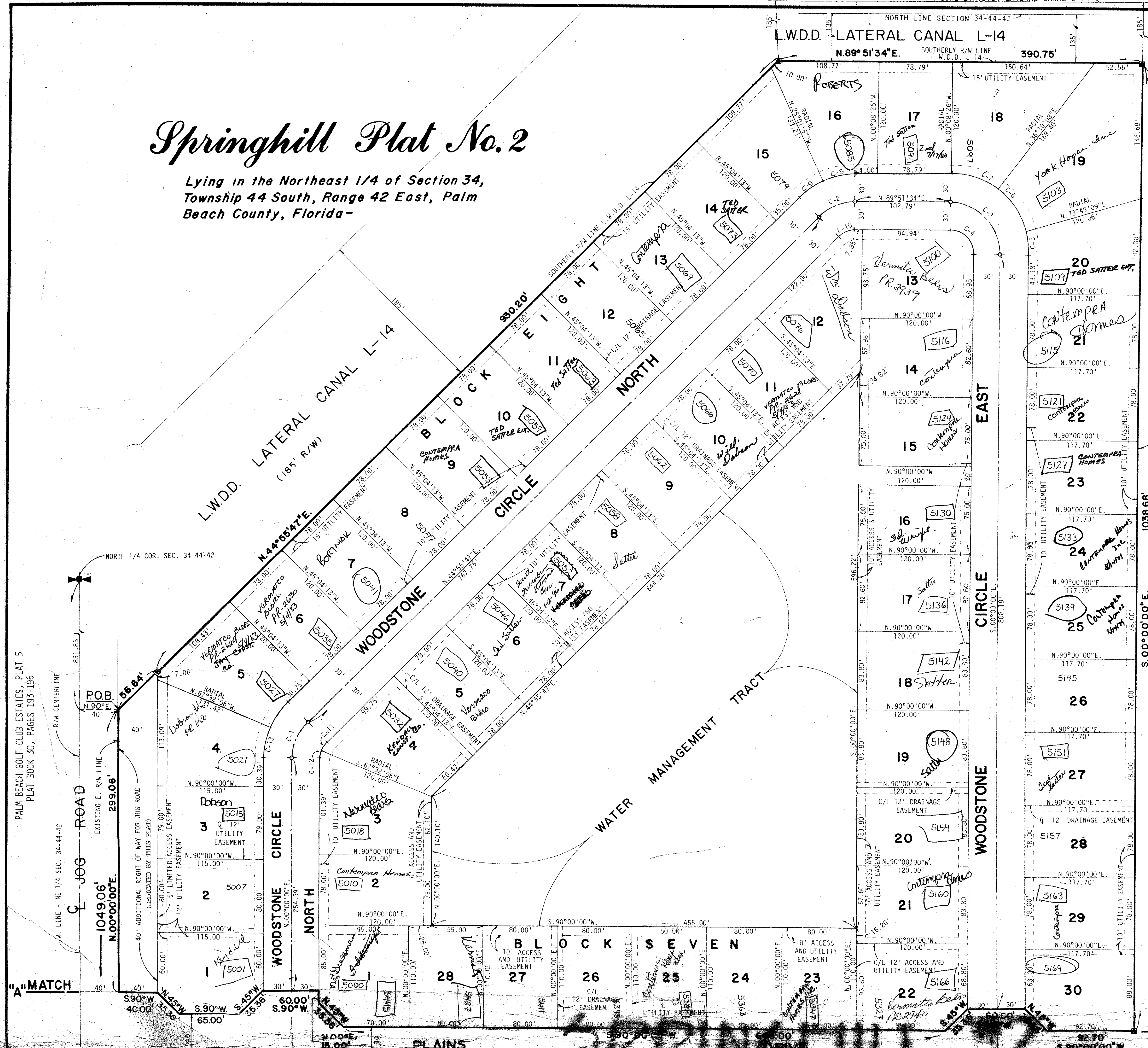
N. 89° 51' 34" E. 390.75'

44

STATE OF FLORIDA
COUNTY OF PALM BEACH
THIS PLAT WAS FILED FOR
RECORD AT _____ M.
THIS _____ TH DAY OF _____
AD, 1978 AND DULY RE-
CORDED IN PLAT BOOK
ON PAGES _____ AND _____
JOHN B. DUNKLE, CLERK
CIRCUIT COURT
BY: _____ DC



0 50 100
GRAPHIC SCALE
ONE INCH = FIFTY FEET



E. LINE - W. 1127.70' - NE 1/4 SEC. 34-44-42

S. 00° 00' 00" E. 1038.68'

1748.68'

NOT PLATTED
ACREAGE

CURVE DATA

C. NO.	CENT. ANG.	RADIUS	ARC	CHORD	TANGENT
C-1	44°55'47"	55.00'	43.13'	42.03'	22.74'
C-2	44°55'47"	55.00'	43.13'	42.03'	22.74'
C-3	90°08'26"	55.00'	86.53'	77.88'	55.14'
C-4	90°08'26"	55.00'	39.33'	35.40'	25.06'
C-5	16°10'51"	85.00'	24.01'	23.93'	12.08'
C-6	37°39'01"	85.00'	55.86'	54.86'	28.98'
C-7	36°18'34"	85.00'	53.87'	52.97'	27.87'
C-8	24°53'31"	85.00'	36.93'	36.64'	18.76'
C-9	20°02'16"	85.00'	29.73'	29.58'	15.02'
C-10	44°55'47"	25.00'	19.60'	19.11'	10.34'
C-11	22°27'53"	25.00'	9.80'	9.74'	4.97'
C-12	22°27'54"	25.00'	9.80'	9.74'	4.97'
C-13	22°27'54"	85.00'	33.33'	33.11'	16.88'
C-14	22°27'53"	85.00'	33.33'	33.11'	16.88'

TURNOUT REQUIRED

1000-125
34-44

BENCH MARK
land surveying and mapping, inc.
WANTMAN & ASSOCIATES, INC.
CONSULTING ENGINEERS
WEST PALM BEACH FLORIDA

SPRING HILL PLAT NO. 2

34-44
LINE 1/4

FIELD BOOK NO.	DATE	JOB NO.	SHEET
33	1978	2900	3
CHECKED	SCALE	DRAWING NO.	3
	1"=50'		